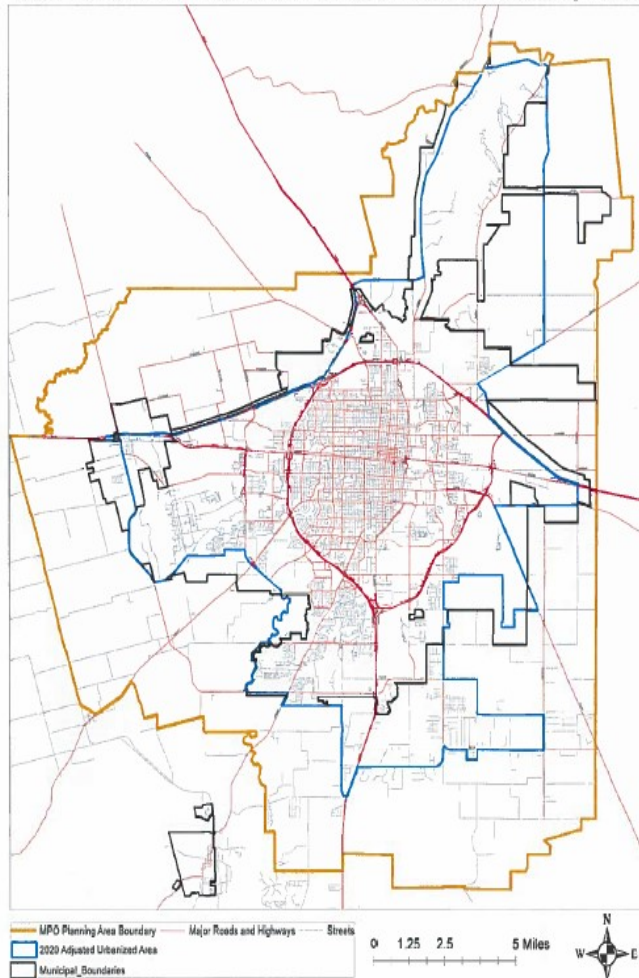


Abilene MPO Insider

The Role of the Abilene Metropolitan Planning Organization

Abilene 2020 Urbanized Area and Metropolitan Planning Area



Texas Transportation Commission Approved
(Based on the 2020 Census Data)

Abilene MPO

FYs 2025-2028 TIP

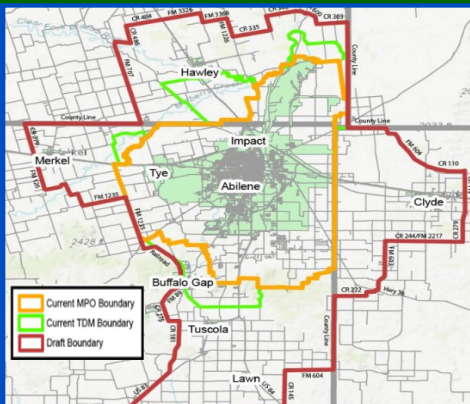
Page 5 of 46

The MPO consists of federal, state and local agencies working together to avoid conflicting plans, duplicated projects or funding conflicts between transportation priorities in the metropolitan planning area. The MPO's role is to develop and maintain the necessary transportation plans for the area to ensure that federal funds support locally developed plans and that the projects are part of a credible planning process that meets the local priorities. The MPO works with various agencies in the development of transportation plans, transit plans, travel demand model, thoroughfare plans, bicycle/pedestrian plans, and many other plans.

Welcome back! Thank you for taking the time to enjoy our newsletter. I tried to incorporate some truly inspiring and interesting articles, fun puzzles and a few helpful ideas into this edition. I hope you enjoy it as much as I did creating it! :)
R.L.Ryan

Table of Content

- Page 1:** Cover Page, Role of the MPO, MPO Boundary Map, Welcome, Possible MPO Expansion.
- Page 2:** Please Say Hello to Ms. PJ Sumner
- Page 3:** Did you Know???
- Page 4:** Did you Know continued...
- Page 5:** Fun & Games
- Page 6:** Useful Info & Shrimp Boil Recipe
- Page 7:** Save the Date
- Page 8:** Resources and Answer Keys



We have some exciting news to share! The Abilene Metropolitan Planning Organization is requesting a boundary expansion. The first since 2006. We compiled the data, worked hand-in-hand with AECOM, TTI, TxDOT, the Expansion Committee, MPO Technical Advisory Committee, MPO Policy Board and our surrounding affected communities (Buffalo Gap, Clyde, Hawley, Lawn, Merkel and Tuscola). We have submitted it to TxDOT who will send it on to Governor Abbott. Fingers and toes crossed in hopes of welcoming the new areas and their representatives!

Please join me in Welcoming

Ms. PJ Sumner

**Environmental Program Coordinator for the West Central Texas
Council of Governments (WCTCOG)**

PJ is an esteemed member of the Technical Advisory Committee



PJ graduated from Wylie High School before continuing her education at the Hendricks School of Nursing in Abilene, Texas.

At Hendricks School of Nursing, she worked as an LVN at the Abilene State School for over 4 years before moving to the Dallas-Fort Worth Metroplex. PJ spread her wings and began a successful new career in business administration working in commercial servicing.

In 2015, PJ retired from Prudential as the Facilities Manager and moved back to Abilene to take care of her elderly parents.

A few years later in 2017, PJ joined the WCTCOG team and has been there ever since. Along with being the Environmental Program Coordinator, PJ works in the Economic Development Department.

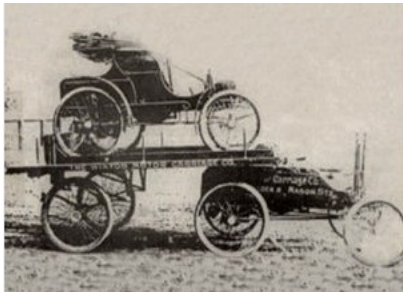
In her spare time, PJ enjoys fishing, golfing, and spending time with her family. She loves the Texas Rangers, and she still remains the Disco Queen of Abilene.

Did you know?

The History Of The Tractor Trailer *Courtesy of: Witte Bros., Exchange Inc.*

Tractor trailers, also known as semi-trucks, semi-trailer trucks and 18-wheelers, are responsible for transporting over 70 percent of the goods and commodities in the United States. Tractor trailers are typically an 18 wheeled truck that includes the truck (the tractor) and the trailer. The tractor trailer has changed a lot since it's conception and we have laid out some of that history below!

The First Tractor-Trailer: Alexander Winton, in Cleveland Ohio, invented the tractor trailer in 1898 and sold his first manufactured tractor trailer in 1899. The Winton Motor Carriage Company of Cleveland manufactured and sold their first 22 cars in 1898 and these cars needed to be delivered to their buyers, and this caused him to invent the concept of the tractor trailer to help with the delivery of his vehicles to avoid the miles of wear and tear required to drive them to his customers.



The first semi-truck, which Winton called an Automobile Hauler, used a modified short-wheeled touring automobile (the tractor) with a cart (the trailer) attached to the back of it. The platform sat on top the engine portion and rested on a pair of wheels on the other end. Most cars and trucks have engines in the front, but this car had its engine in the back. The platform on this tractor trailer could only hold one vehicle. Winton did not pursue the design of his first semi-truck, but others continued to expand on the concept.

Expanding On The Concept: August Charles Fruehauf, a Detroit blacksmith, built a carriage for someone who wanted to transport his boat in 1914 and he officially called the carriage a semi-trailer. It was a big success, and he went on to develop the carriage for many other uses, like hauling lumber. In 1918 he incorporated the Fruehauf Trailer Company, which is still a leading maker of semi-trailers today.



John C. Endebrock had experience building horse carriages and used his knowledge to develop what he call the "Trailmobile". It was an iron chassis that was mounted on wheels and springs that could be trailed behind a Ford Model T. It was designed so that it would be possible for a single person to hook the trailer to the car, earlier trailers needed three people to hook up chassis to the car.

In the 1930's, George Cassens was responsible for taking the vehicle hauling business to the next big step in it's evolution. Cassens attempted to ship the new cars directly to the buyers and realized the shipment cost were extremely high for the car manufactures. Cassens saw an opportunity and offered to haul the cars from the manufacturing site to the car owners with his four-car auto trailer that was pulled with a two-ton Dodge truck.



Did you know?

The History Of The Tractor Trailer (continued)

Courtesy of: Witte Bros., Exchange Inc.

Mack Mack Trucks were one of the first innovators of heavy-duty commercial vehicles. Mack was founded in 1900 and developed and manufactured its own engines that made use of an automatic starter, which made the hand-crank obsolete. From 1929 to 1944, Mack produced 2,601 semi or full truck trailers and became known for building tough and durable trucks.



Peterbilt:

The logging industry had an impact on the popularity of the semi-truck. Peterbilt, a truck company, started selling its semi-trucks in 1939 and were used exclusively to haul logs from the forest to the lumber mills. T.A. Peterman, founder of Peterbilt, refurbished army trucks and equipped them with trailers specifically to haul logs.



Freightliner:

Freightliner was founded in 1929 under the name Freightways Manufacturing as a company division to Consolidated Freightways to produce semi-trucks for company use. Freightways Manufacturing used Fageol trucks as a starting point for the design, putting the cab, the area inside the truck where the driver is seated, above the front axle of the trailer. The new truck being shorter in length allowed for the use of longer trailer. And in 1942 Freightways Manufacturing was renamed to Freightliner Corporation and as a part of their relaunch they released the first truck with an all-aluminum cab.

Over the past 100 years, the two wheeled semi-trailer that Winton invented to haul a single car has turned into the eighteen wheeled tractor trailer with three axels that we know today. Tractor trailers now transport 10.23 billion tons of freight in the United States, which is about 72.5% of the nation's freight. All of this is possible due to the evolution of Winton's two wheeled semi-trailer.



**Sources/Pictures courtesy of:
Witte Bros., Exchange Inc.**

<https://www.wittebros.com/2022/04/05/the-history-of-the-tractor-trailer/>
<https://freightliner.com/why-freightliner-a-tradition-of-innovation/background-a-tradition-of-innovation/>
<https://www.peterbilt.com/about/heritage>
<https://medium.com/@abornandco/the-history-of-the-semi-truck-6b6c022e7f91>
<https://www.gwtrans.com/the-history-of-semi-trailer-trucks>

FUN & GAMES

MEANS OF TRANSPORT UNSCRAMBLE THE WORDS

Unscramble the means of transport vocabulary and number the pictures

























1. rac _____

2. ilcebyc _____

3. nlaep _____

4. tcreoos _____

5. itnar _____

6. aracavn _____

7. usb _____

8. vna _____

9. yfrer _____

10. ishp _____

11. iatx _____

12. obta _____

13. rryol _____

14. eirf gneine _____

15. rmat _____

16. leaabmucn _____

17. eirltpeohc _____

18. bmosnoilwe _____

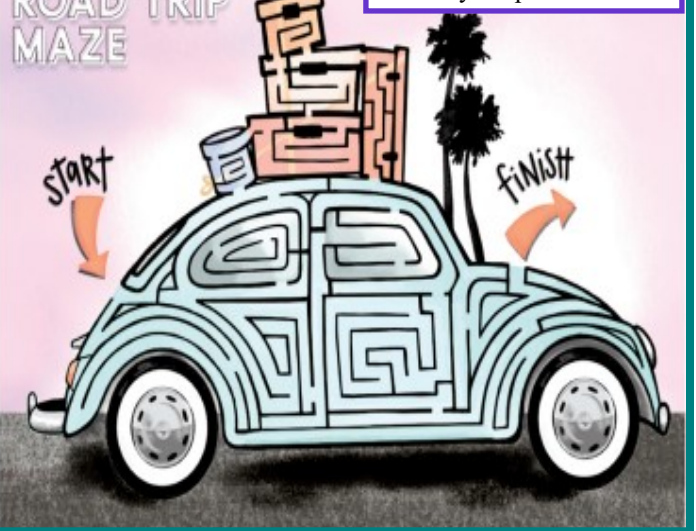
19. ltyomceroc _____

20. rcatrot _____

Copyright © 01/12/2019 english4kids.com. All rights reserved.

ROAD TRIP MAZE

Courtesy of: persialou.com



Road Trip Word Search Challenge



QGYMDIJJPASSINGLANEEEXOKCOX
 DVKVLPDEL OIZQQBBSZMPVCOHT
 DDYNPHVTUXRRFDIIPRMAMUAGW
 ZJMKBIKVEYUAOULNNZHOSRZAT
 ZGHTOOLLOTCRRLREYRDUTIHG
 GECCZF OATAMSCUBDAODVQPGFL
 CLJECNHHTVCAIPOYUXUAUTBL
 QCCPVEFXXGXRHATAZNGCVHKEXB
 VRZDDFXPDWOMHGRGVPTAACSP
 OIFAXWKDJZPGQUADAPLYVZIBAY
 VCCOLOYXKAKINKEJPXBRRUPLRZ
 YCPMARFFOLHJREJCUCTVTIBTP
 IIPMOTORCYCLEUASCRRQCUI SP
 AFLQVCIIIPZDIGEDQABREMMWBY
 HFUZGAFPUJNLRCRTRDENPIGUGY
 SAQGRFQQZFAXINZDSSEL CNMIU
 YRVYAWHGIHDVCUFTERDMKTHDQ
 LTFRBSOQWHEZAYAPSEYUVTIXE
 JUTNXLSUBRSCERLTENN LN JHYR
 DGDOYNXTAYZREAI PHYSY YCRDL
 DJHPSPTAXXATCSQLZWKVDBZD
 UOSZUKGJNTXEKXULFTVYWWD AE
 GZLNKKOGXBIEOIHENIKIGYNOC
 TUINGGJTPTFROLIDOUBLELINES
 ZMSSAPREVOTDNKFQEANAVINIM

BILLBOARD
 BUMPER STICKER
 BUS DRIVER
 DOUBLE LINES
 EXIT
 GAS STATION
 HIGHWAY

LICENSE PLATE
 MINIVAN
 MOTORCYCLE
 OFF RAMP
 OVERPASS
 PASSING LANE
 PICKUP TRUCK

REST AREA
 SEDAN
 SPEED LIMIT
 TOLL BOOTH
 TRAFFIC CIRCLE
 TRAFFIC LIGHT

AUGUST HOLIDAYS

- 1-Swiss Day
- 2-National Ice Cream Sundae Day
- 3- Campfire Day (1st Saturday)
- 3-National Watermelon Day
- 4-Sister's Day
- 4-International Forgiveness Day (1st Sunday)
- 6-Wiggle Your Toes Day
- 6-National Root Beer Float Day
- 7-National Lighthouse Day
- 9-Book Lover's Day
- 10-Lazy Day
- 10-National S'mores Day
- 12-Middle Child's Day
- 13-Left Hander's Day
- 14-National Creamsicle Day
- 16-National Tell a Joke Day
- 17-National Thrift Shop Day
- 19-World Photo Day
- 21-Spumoni Day
- 22-Be an Angel Day
- 26-Dog Appreciation Day
- 31-National Eat Outside Day



USEFUL INFORMATION

Prepare your Car for Summer Travel

Courtesy of: [https:// www.aaa.com](https://www.aaa.com)

1. Check tires and tire pressure
2. Listen to and feel the brakes
3. Secure and test the battery
4. Top off Engine Oil and other fluids
5. Replace Wiper Blades & Windshield Cleaner
6. Check Belts and Hoses
7. Keep the AC running Cool
8. Replenish Emergency Kit Supplies
9. Plan ahead for Vehicle Service

Texas - Summer is HERE

Get these out of your Car!

1. Fuel and containers for fuel
2. Ammunition
3. Soda Pop & Beer (yes. it can explode)
4. Spray cans, paint, bug spray, any pressurized can
5. Sunscreen, Lipstick, your Glasses
6. Water bottles
7. Medication (they're susceptible to heat degradation)
8. Batteries, Crayons, Wine or Lighters
9. Your Phone, CDs

Most importantly: Children and/or Pets

Shrimp Boil Foil Packets



Ingredients

- 1 ear of corn, cut into 8 pieces
- 1 medium zucchini, sliced thick
- 4 cloves garlic, minced
- ½ lb uncooked shrimp
- 2 andouille sausage
- 1 teaspoon [Old Bay Seasoning](#)
- 1 teaspoon [Cajun seasoning](#)
- 4 tablespoons butter
- Fresh parsley, chopped

Instructions

- 1 Tear an 18" piece of heavy-duty foil for each packet, along with a 16" sheet of parchment paper for each. Layer the parchment paper on top of the foil.
- 2 Divide the **corn**, **zucchini**, minced **garlic**, **shrimp**, **spices**, and **butter** between the two sheets of foil.
- 3 To form the packets, bring one of the short edges of the foil to meet the other, then crimp around all edges to seal.
- 4 Cook the packets on a grill (or the grill grate over your campfire) for 8 minutes, flipping occasionally. (Approximately 8 - 10 minutes)
- 5 Remove from the grill and let cool slightly. Open the packets carefully – they will be full of hot steam. Top with fresh **parsley** and enjoy.



JUL
27

41ST TOUR DE GAP BIKE RIDE

SPORTS

Buffalo Gap Flea Market (Old
Settlers' Reunion)
100 Vine Street
Buffalo Gap, TX 79508
(325) 829-0617

Car Show

Date: Aug 10, 2024

Location(s): [AEL Round Building](#)
[AEP Texas Big Country Hall](#)
[Taylor County Coliseum](#)

Category(s):
[Expo Center](#)

1941 Navajo Circle, Abilene Tx 79602



TEXAS
ABILENE REGIONAL AIRPORT, ABILENE, TX

SHIFT-S3CTOR
2024

www.AIRSTRIPTATTACK.co



THE STANDING 1/2 MILE
1941 NAVAJO CIRCLE, ABILENE, TX 79602

CLASSES

90'-PRESENT ALL MAKES
HOTTEST HATCH
YOUNGIN' (18 N UNDER)
MOPAR 90' - PRESENT
MUSTANG 90' - PRESENT
CORVETTE 83' - 88'
CORVETTE 93' - PRESENT
CAMARO/FIREBIRD 67' - 85'
CAMARO/FIREBIRD 86' - PRESENT
CLASSIC 55' - 89'
ANTIQUE 54' N OLDER
PICKUP 89' N OLDER
PICKUP 90' - PRESENT
LOWERED TRUCK
LIFTED TRUCK
50% BOX
IMPORT
EURO
TUNER
STOCK
LOWRIDER
SPORT BIKE
CRUISER
RAT ROD

VFW Post 6873
5pm - 9pm

1049 Veterans Dr. Abilene
TX 79605

07.27.2024

Not Included
PRESENTS

2 STEP COMPETITION

BASS CONTEST HOSTED BY
TEAM ONE DEEP

2ND ANNUAL
BOPS
&
Builds

DYNAMETER HOSTED BY
AEP

PROCEEDS TO
BENEFIT
TEXAS HUNTERS
FOR HUNTERS

FOOD TRUCKS
MUSIC
RAFFLES
TROPHIES

REGISTRATION DAY OF : 3PM - 5PM
EARLY REGISTRATION EMAIL :
NOTINCLUDEDCARCLUB@GMAIL.COM
QUESTIONS CALL/TEXT
325.480.6625 / 325.439.0117 / 850.362.9125

QR CODE

SOCIAL MEDIA ICONS

SAVE
THE
DATE



AUG
08

ARTWALK

FESTIVALS AND EVENTS

Center for Contemporary Arts
220 Cypress Street
Abilene, TX 79601

Resources, Answer Keys

<https://www.abilenempo.org/index.html>
<https://abilenetx.gov/>
[Google.com](https://www.google.com)
[Wikipedia.com](https://www.wikipedia.com)
<https://www.timeanddate.com/holidays/fun/>
<https://www.printactivities.com>
<https://www.englishworksheets.com/>
<https://www.abilenevisitors.com/events>
<https://www.freshoffthegrid.com/shrimp-boil-foil-packets/>
<https://persialou.com>
<https://www.ucf.edu/pegasus/pan-american-highway/>
<https://sofestive.com/holiday-list-2/>
<https://www.wittebros.com/2022/04/05/the-history-of-the-tractor-trailer/>
<https://freightliner.com/why-freightliner/a-tradition-of-innovation/background-a-tradition-of-innovation/>

MEANS OF TRANSPORT UNSCRAMBLE THE WORDS ANSWER KEY

Unscramble the means of transport vocabulary and number the pictures

1. rac	car
2. ilcebyc	bicycle
3. nlaep	plane
4. tcreos	scooter
5. itnar	train
6. aracavn	caravan
7. usb	bus
8. vna	van
9. yfrer	ferry
10. ishp	ship
11. iatx	taxi
12. obta	boat
13. rryol	lorry
14. eirf gneine	fire engine
15. rmat	tram
16. leaabmucn	ambulance
17. eirltpeohc	helicopter
18. bmosnolwe	snowmobile
19. ltyomceroc	motorcycle
20. rcatrot	tractor

Copyright © 01/12/2019 englishworksheets.com. All rights reserved.

Road Trip Word Search Challenge

Q G Y M D I J P A S S I N G L A N E E X O K C O X
D V K V L P D E L O T Z Q Q B B S Z M P V M U C O H T A G W
D D Y N P H V T U X R R F D I I P R M M A S U R I Z A T
Z J M K B I K V E Y U A O U L N N Z H D O S T R I N G
Z G H Y O O B L L O T C R R L R E Y R D U T I N G
G E C C Z F O A T A M S C U B D A O D V Q U G F L
C L J E C N H H T V C A I P O Y U X U A U T B L
Q C C P V E F X X G X R H T A Z N G C V H K E X B
V R Z D D F X P D W O M H G R G V P T A A C S P P
O I F A X W K D J Z P G Q U D A P L Y V Z I B A Y
V C C O L O Y Y K A L N K E J P X B R R U P O R Z
Y C P M A R F F O L H J R E J C U C T V T I B T P
I I P M O T O R C Y C L E U A S C R R O C U L S P
A F L Q V C L I P Z D I G E D Q A B R E M M W B Y
H F U Z G A F P U J N L C R T R D E N P I G U G Y
S A Q B R F O O Z F A X I N Z D S S E L C N M I U
Y R V O A W H G I H D V C U E T E R O M K T H D Q
L T E R B S Q Q W H E L A Y A P S E Y U V T I X E
J U T N X L S U B R S C E R L T E N N L N J H Y R
O G D O Y N X T A Y Z R E A L P H Y S Y V C R D L
D J H P S P P T A X X A T C S Q L Z W K V D B Z D
U O S Z U K G J N T X E K X U L F T V Y W W D A E
G Z L N K K O G X B I E O I H E N I K I G Y N O C
T U I N G G J T P E R O I I D O U B L E L I N E S
Z M S S A P R E V O T D N K F Q E A N A V I N I M

BILLBOARD	LICENSE PLATE	REST AREA
BUMPER STICKER	MINIVAN	SEDAN
BUS DRIVER	MOTORCYCLE	SPEED LIMIT
DOUBLE LINES	OFF RAMP	TOLL BOOTH
EXIT	OVERPASS	TRAFFIC CIRCLE
GAS STATION	PASSING LANE	TRAFFIC LIGHT
HIGHWAY	PICKUP TRUCK	

